



SPORTS SURFACES, PLAY EQUIPMENT & LEISURE INFRASTRUCTURE



BIN SABB SPORTS AND LEISURE LLC

Infrastructure for Sporting Excellence

ONE-STOP-SHOP FOR ALL SPORTS & LEISURE INFRASTRUCTURE

ABOUT US

SABT group of companies was established in 1993. Starting on a small scale in the area of sports surfaces, we have significantly expanded our portfolio of activities during the last 25 years and provide a comprehensive range of services from design to post sales maintenance. We are based out of U.A.E and have executed projects in various GCC countries, Iran, Azerbaijan, Yemen and India.

Today the “**SABT**” brand name is synonymous with quality, trust and service. This is amply demonstrated by the impressive list of our clients who have repeatedly done business with us over many years. Our materials are sourced from reputed companies who are industry leaders in their respective categories. We have executed some of the most prestigious and largest projects in the United Arab Emirates.

CUSTOMER SATISFACTION and **PRODUCT INNOVATION** is the core to our business philosophy. We have a strong focus on meeting customer needs not only during the project execution stage but also providing finest after sales services. The outcome is a product that consistently outperforms the competition.

Our portfolio of activities in sports surfaces, industrial flooring, play and sports equipment and leisure infrastructure covers the following spectrum.

SPORTS SURFACES

- Tennis Courts
- Multi-sport Surfaces
- Running & Jogging Tracks
- Cycle Tracks
- Safety Surfaces
- Equine Flooring
- Artificial Turf
- Gymnasium Flooring
- Squash Courts

PLAY EQUIPMENT

- Playground Equipment
- Splash Pad Equipment
- Sports & Athletic Equipment

LEISURE INFRASTRUCTURE

- Cubicles and Lockers
- Outdoor Furniture
- WPC Decking & Pergolas
- Wall Protective Padding
- Telescopic Seating
- Auditorium & Stadium Seating

COMMERCIAL FLOORING

- Polyurea Flooring
- Polyurethane Flooring
- Epoxy Flooring
- Resin Bound Flooring
- Bus Lane Coatings





SPORTS SURFACES

Our spectrum of sports surfaces cover a wide range of sports and athletic activities and are designed for indoor and outdoor use, over asphalt or concrete. The surfaces are designed to withstand the intense sporting activity and will not mark easily. We have a wide range of surfaces in cast in-situ Acrylic, Polyurethane and Polyurea as well as prefabricated tiles and mat rolls.

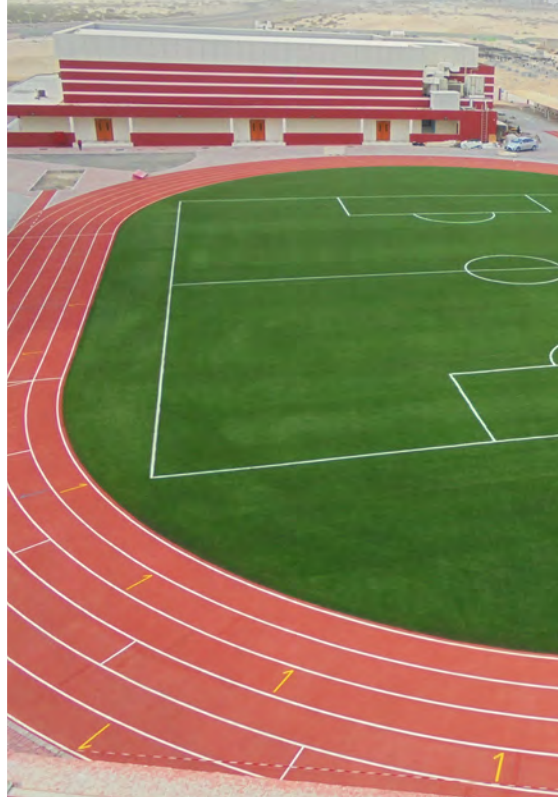
We have continuously improved and innovated our sports surfaces to cater to the changing needs of our customers. Our innovative formulations allow athletes to perform in a full range of temperature (40°-120°F) and provide greater force reduction. The result is a surface that dynamically responds to body impact and reduces fatigue on player's lower limbs.

The attractive designs and colors of our safety surfaces not only ensure 'safe play' for the children of all ages but can also stimulate young minds through varied designs and patterns.

With increased focus on environment, we have introduced environmental friendly, non-toxic water based sports surface systems which use recycled and post-industrial components in each of its formulations. This choice minimizes the exploitation of wood and petroleum resources.

Till date, we have installed 1,000,000 m² of sport surfaces in the U.A.E.





ACRYLIC SURFACES

Our environmental friendly water-based acrylic sports systems come from California Products Corporation, U.S.A, world's largest manufacturers of acrylic sports surfacing systems and surface preparation products. These surfaces are 100% premium acrylic all-weather surfaces suitable for indoor or outdoor application and over concrete or asphalt. They are ideal for tennis courts, athletic tracks, netball courts and other multipurpose sports surfaces such as bicycle lanes, walkways, pavements etc. These surfaces are available in a full range of standard and custom colors perfect for sport and walkway applications.

Our surfaces offer excellent UV resistance, durable texture and playability. They require minimal maintenance thereby reducing operational costs. The multi-layer resiliency of the surfaces extends the biomechanical life of players for all ages and skills. Exceptional traction as well as accurate ball bounce encourages high performance.



PLEXIPAVE AND PLEXICUSHION: THE NO. 1 SEED IN TENNIS COURT SURFACES

Advanced acrylic tennis surface systems for indoor and outdoor tennis facilities

Plexipave and Plexicushion systems are advanced **tennis surfacing systems** designed to provide players with the highest levels of surface performance for competition and cushioning for safe training.

The Plexicushion System combines the consistent bounce, sure footing and outstanding durability of Plexipave with the innovative, shock-absorbing properties of EPDM rubber cushioning. The result is a tennis surface that dynamically responds to body impact and reduces fatigue on legs, knees, ankles and feet.

The Plexicushion substrate, a special blend of latex, rubber and plastic particles forms a resilient layer that absorbs body shock and reduces muscle fatigue. The 100% acrylic Plexipave surface provides uniform bounce, long lasting color and allows speed of play specification.

DURABILITY AND VALUE

It's 100% acrylic, asbestos-free composition retains color, texture and playability for 5 to 7 years between resurfacings. Excellent wear resistance represents significant value: a Plexipave or Plexicushion court is a wise investment that yields substantial returns year after year.

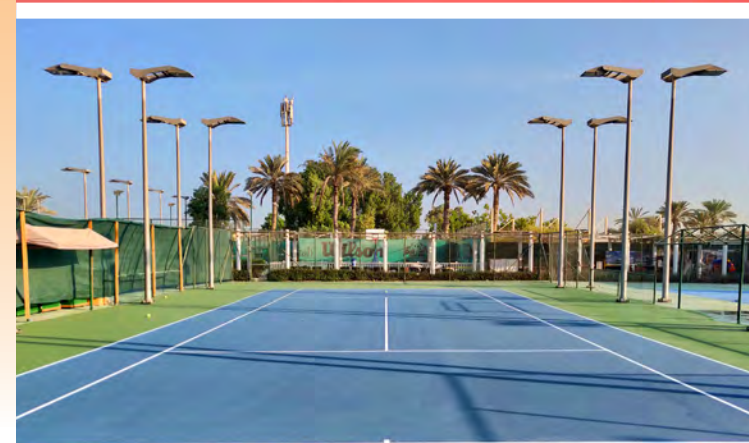
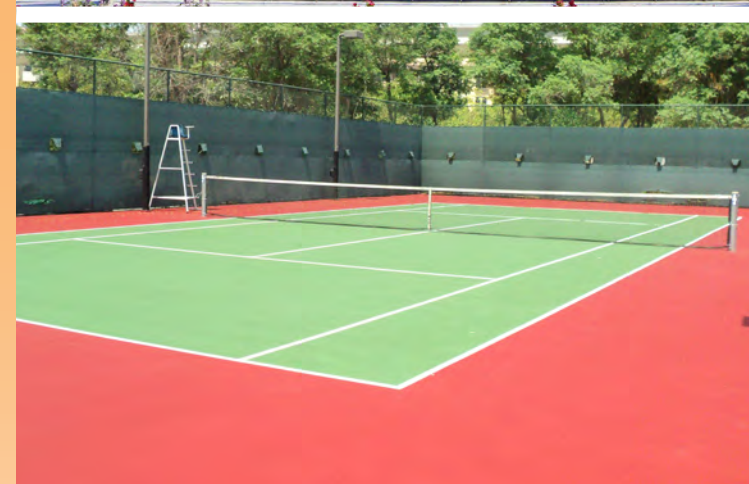
SUPERIOR PLAYABILITY

Plexipave and Plexicushion are the most widely used acrylic tennis court surfacing systems in the world. They have achieved a global presence in tennis surface systems, and enjoy an international reputation for excellence and dependability.

Tennis players everywhere attest to the superior playability of the Plexipave System. Plexipave's speed of play makes it possible for all types of players to excel, and its distinctive qualities of consistently true bounce and sure footing enhance coaching, training and competition. According to coaches, when tournament competitors play on Plexipave and Plexicushion, they are unhindered by surface inconsistencies, allowing a level of play which truly reflects the athlete's skill.

The surfaces are rated by International Tennis Federation and can be customized to ITF Pace Ratings.

We offer a choice of 4 coats 2mm non-cushioned as well as 4mm and 6 mm cushioned surfaces to meet varied requirements and budget.



PLEXIFLOR: THE IDEAL CHOICE FOR MULTI-SPORT SURFACES

Advanced basketball and multi-sport surface systems for indoor and outdoor athletic facilities

Plexiflor is an all-weather, non-abrasive high performance basketball court and multi-sport surface system made for both indoor and outdoor use. Incorporating years of sports surface manufacturing and field experience with the most recent advancements in material technology to ensure a safe and comfortable surface, Plexiflor is ideal for indoor competitive basketball and multi-sport courts as well as outdoor courts.

Plexiflor's textured surface design delivers unparalleled grip performance in game play, allowing greater control and safety when jumping and turning in close proximity. The exceptionally tough surface is designed to withstand the intense activity of the sport at a minimal maintenance cost.

Plexiflor sport surfaces are ideal for basketball, badminton, volleyball, and netball courts as well as for inline hockey, skate parks, cycle tracks, play areas and multi-sport recreational areas. Three distinct textures ranging from coarse texture for slip resistance and superior control to smooth texture for sports that require minimum

All these surfaces are available in 10 popular standard colors in 5 coat non-cushioned as well as 6mm and 8mm cushioned thicknesses.

ACRYLOTEX SKIDGRIP DECORATIVE PAVEMENT COATING

Textured, slip resistant surface for pedestrian walkways

Acrylotex SkidGrip is a unique, durable acrylic coating and overlay system designed for strong, long-lasting decorative protection on asphalt and concrete surfaces. It is much more durable and permanent than paint and stain and is less expensive to maintain than pavers and decorative concrete. Acrylotex SkidGrip provides a medium texture, non-skid surface ideal for applications such as pedestrian walkways, bridges, pathways, station plazas, patios, courtyards, pool decks, golf paths, median areas, parking lots, bus halts etc.

ALLSPORT MULTI-PURPOSE SPORTS SURFACE

A value priced system with the quality of high performance formulations. AllSports is suitable for interior or exterior applications and the specifically formulated system has excellent non-skid qualities suited for sports as volleyball, netball, kickball and general play areas. AllSport can also be used for bicycle lanes and walkways.



POLYURETHANE SURFACES

The flexible polyurethane system for high performance floor surfaces

Our bespoke flexible polyurethane systems are perfectly adapted to fit the needs of wide-ranging applications and environments, with our comprehensive range of systems installed in over 1000 projects in public civic facilities, hospitality, education, sports and real estate sectors. Projects ranging from IAAF accredited running tracks, jogging tracks, play area safety surfaces, sports courts, swimming pool and wet areas surfaces, equine flooring have been executed.

From the outset we work with our customers to design and deliver flexible polyurethane solutions appropriate to the needs of each project.



ATHLETIC TRACKS

Our athletic track systems which are seamless provide a high quality platform for every standard of track and field event. These cast-in-situ systems utilize rubber granules mixed on site with polyurethane binder applied with special mixing equipment and paving machinery. The binders required for construction of these tracks is sourced from MRI Polytech, U.K. while rubber granules are sourced from reputed suppliers in Germany, Malaysia and U.A.E.

The system meets all the demands of international standards, including IAAF and provides excellent dimensional stability, tensile strength and adhesion to the substrate, a combination that ensures long lasting performance and durability. The tracks have high shock absorbency and optimum force reduction, thereby minimizing injury risks.

Our running tracks come in 3 versions, designed to suit purpose and budget– Spray System, Sandwich system and Full Pour System

JOGGING TRACKS

Our jogging tracks have been specifically designed to meet the harsh high temperature and UV environment of the Middle East. This cast-in-situ dual layer system is constructed from high quality SBR and EPDM granules combined with strong bond strength binders and sealants and finally coated with a high abrasion resistant aliphatic coating to withstand high temperatures and UV impact. **These tracks are tested and certified by Center of Sports Technology, U.K.**

Over the last 16 years, we have successfully installed over 400,000 sqm. of jogging tracks in the U.A.E. and have been approved by Dubai Municipality, Ajman Municipality and Abu Dhabi Municipality and RTA.



PLAY AREA SAFETY SURFACES

This wet pour cast-in-situ system constructed from a wide range of colored EPDM granules combined with polyurethane binders gives a consistent hard wearing surface. Safety surfaces can be created in a variety of colors, shapes and images to attract and stimulate young minds.

Thickness range of 25mm to 110 is available depending upon critical fall height and complies with applicable international regulations. **Our safety surfaces are tested by Labosports France and comply with EN 1177 Standard.**

INDOOR SPORTS COURTS, SPORTS HALLS & GYMNASIUMS

Flexible hard wearing multi-sport surfaces

Our self-levelling polyurethane system provides a high slip and wear resistant durable flooring for intense activity areas such as sports halls, gymnasiums, fitness centers etc. Our indoor hall sports flooring is tested and certified by Center for Sports Technology, U.K.

We also offer several other options for indoor sports flooring such as pure Polyurethane systems and a flooring system which combines the acrylic and PU together as well as pre-fabricated rubber mat rolls and tiles.

The range of recreational flooring is resistant to mechanical impact and point load, with excellent anti-slip and wear-resistant properties.

PREFABRICATED RUBBER TILES AND MAT ROLLS

Our prefabricated range of rubber tiles come in various sizes and attractive colors in fully pigmented SBR and EPDM top layer. We also have vulcanized rubber mats in large rolls minimizing the joints required and thereby giving the surface more stability as well as longer life.

Pre-fabricated rolls and tiles offer as an affordable alternative to cast-in-situ safety surfaces and can be used for a wide variety of applications in schools, universities, children playground etc.

WET AREA SAFETY SURFACES

Ideal for swimming pool surrounds and water play areas, our surfaces are designed using high quality 100% recyclable polygraphene elastomer (PGE) granules to handle aggressive nature of chlorine in a pool or water park environment. Its colorfast technology is designed to protect against premature fading in the harshest UV conditions.

We also provide an economical cast-in-situ SBR based flooring system sealed with a “weatherproof” sealer coat, making it ideal for swimming pool decks and water play areas.



EQUINE FLOORING

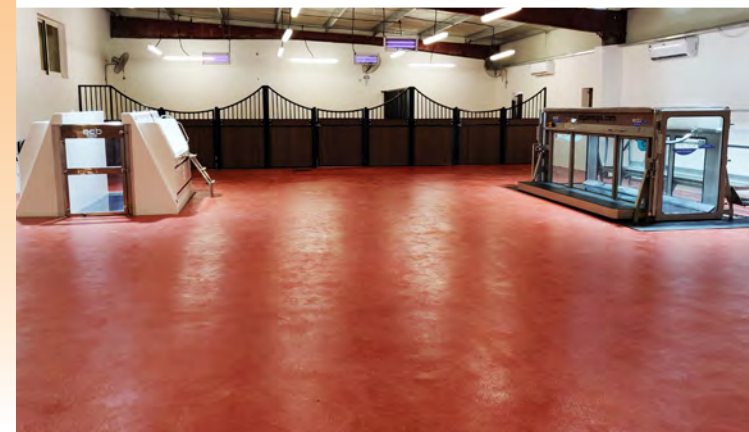
This is a unique product with unmatched durability and has been designed in-house. We have innovated different types of equine flooring to suit client needs and the budget. Multiple floor coats with 6 layers of sealing are designed to prevent ingress of horse excrements. The exceptionally tough surface withstands the impact of horse hoofs and is virtually indestructible. Reduced straw/wood shavings consumption and less fatigue to the animal pays for flooring over a period of time.

The flooring provides comfortable walking, tranquil for rest and hygiene requirements of horse stables, walkways and training areas. It comes in 3 different finishes and specifications to suit the purpose and the budget.

Our unique Polyurea/Polyurethane Spray Foam combined system is a revolutionary product suitable for equine pools and sea walkers. Totally impermeable, it last for years.

Apart from cast-in-situ flooring, we also provide options for vulcanized rubber mats and SBR tiles for installation in walkways, trotting rings, wash bays and horse stalls.

We are proud to be associated with the iconic Meydan Racecourse where we installed 43,000 sqm. of equine flooring and 14,000 sqm of wall mats.



ARTIFICIAL GRASS

Durable and environmentally friendly alternative

Artificial grass can be used for a wide range of applications in sports fields, play grounds, road verges and medians, residential landscaping, roof tops etc. In Middle East environment where water is scarce and natural grass difficult to grow and maintain, artificial grass is an obvious alternative. Synthetic turf is particularly hardwearing and is characterized by a long lifespan. Our range of artificial grass is has high anti-UV stability giving the product a long life in harsh environmental conditions.

Our entire range is free of lead and other heavy metals making the product very environmentally friendly.

Our sports range of grass comes with FIFA certifications.

SQUASH COURTS

All our squash courts are constructed from WSF approved wall plaster, wooden flooring, glass wall and accessories.



INDUSTRIAL & COMMERCIAL FLOORING

Durable and environmentally friendly alternative

Our industrial and commercial flooring coatings come in a variety of materials to suit each type of application requirements

Acrylic Emulsion Coating for asphalt pavement surfaces, car parks

Acrylic Crosslinked Polymer coating designed for bus and bike lanes

Polyurea coating for heavy duty industrial use, commercial warehouses, back-of-the-house facilities, cold stores, lining of water bodies etc. Can be used as an excellent waterproofing membrane and also comes in a potable water safe material

Polyurethane Concrete coatings for use in areas requiring high resistance to physical and thermal shock combined with outstanding chemical resistance

Performance Epoxy coatings designed to withstand excellent abrasion, impact, wear and chemical resistance.

AREAS OF APPLICATION

- Commercial kitchens, restaurants, bars and food storage facilities
- Hospitals, laboratories, educational facilities
- Manufacturing, warehousing environments
- Car parks, bus lanes



OUTDOOR DECORATIVE FLOORING

Suitable for walkways, pavements, water parks, swimming pool surrounds, driveways, terraces etc., our **Resin Bound and Resin Bond systems** offer a variety of options in attractive colors to meet the desired purpose and budget. These high strength systems are extremely durable, look attractive and are very easy to maintain.

Resin Bound flooring system is installed typically in thickness ranging from 10mm to 20mm whereas Resin Bond flooring system is a broadcast system with maximum thickness of 4mm.



PLAY & SPORTS EQUIPMENT

By combining a sense of adventure, challenge, fun and learning, we provide a unique experience that promotes healthy living and recreation. Our range of play and sports equipment are suited for indoor and outdoor sports courts; children play areas, water parks and splash pads, adult fitness areas including senior citizens and physical disability, team sports and athletic activities.

All our equipment are sourced from highly reputed manufacturers from France, Canada and Spain.





CHILDREN PLAYGROUND EQUIPMENT

The children playground equipment are from Proludic, France for ages 2-15 and come in a variety of modern and innovative designs. They are aimed to build motor, cognitive and social skills amongst children in a highly recreational and imaginative environment. All our play equipment are ergonomic, durable, UV and weather resistant and comply with all European safety norms. The play panels are made from environmental friendly laminates.

The play equipment from various age groups can be combined in various permutation and combinations in a community facility to create the concept of an “**INTEGRATED FAMILY RECREATION**”. The philosophy behind this concept is that the facility should be able to provide leisure and fitness activities for all ages of visitors, from 2 to 15+ years. In addition, the facilities should be structured in such a manner that the entire family can enjoy it in a collective manner. Our “Inclusive Play Equipment” allow children of all abilities to participate in the fun-filled play activities without any hindrances.





OUTDOOR FITNESS EQUIPMENT

The perfect way towards active living and healthy communities!

Our outdoor fitness equipment use a combination of the body's mass for resistance as well as hydraulic resistance which allows them to be used by people of all ages and stages of physical fitness. They offer the opportunity to achieve a well-balanced all over body work-out in five different categories of fitness – warm-up and stretching; balance and flexibility; cardio and core strength; and upper and lower body strength.

Ideal for any green space, our outdoor fitness equipment is the fun filled and affordable way to help people get and stay fit. They are built to last and will provide years of enjoyment and health benefits without the need for major routine maintenance. These outdoor gyms can be installed along jogging trails, at schools, universities, public parks etc.

INCLUSIVE PLAY EQUIPMENT

Every child should have equal access to good play opportunities. Our inclusive playground equipment allows people of determination to actively along with other children.





AQUATIC PLAYGROUND EQUIPMENT

From EMPEX Watertoys Canada, these equipment are unbeatable in quality and design. The equipment are made from non-ferrous materials, thereby offering a lifetime corrosion warranty and low heat conductivity in hot climatic conditions. Use of composite plastics allows more latitude to design high quality, creative tactile forms which are not only attractive but safe for children interaction. Empex Watertoys equipment do not require elaborate foundations which decreases overall installation costs.

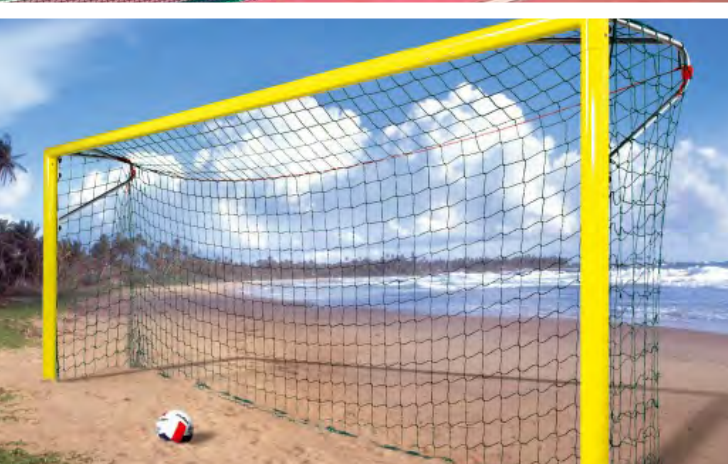




SPORTS EQUIPMENT

Our range of outdoor and indoor sports courts equipment are from Lausín y Viñete, Spain. They cover a wide range of sports such tennis, basketball, volley ball, badminton, soccer, handball etc as well as entire range of field, track and athletic equipment. Lausín also offers sports hall divider nets, ceiling protection nets etc.



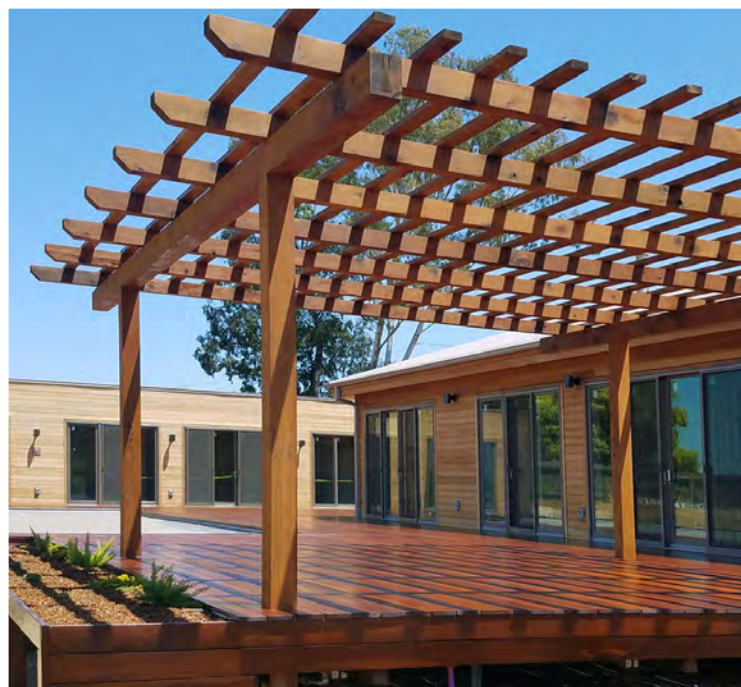


LEISURE INFRASTRUCTURE

The indoor leisure infrastructure range includes cubicles and lockers in wood, MDF and High Pressure Laminates; wooden floors for sports and multi-use indoor halls; wall padding; auditorium, lecture rooms and sports hall seating in fixed, telescopic and demountable styles.

The outdoor range consists of decking, cladding, seats, benches, stadium seating, litter bins, pergolas, kiosks; bicycle stands, chain link and wire mesh fence, shade structures etc. Our outdoor furniture can be customized in hard wood, recycled plastic or Wood Plastic Composite materials.





CUBICLES & LOCKERS

Our lockers are available in wood, High Pressure Laminate (HPL) and steel whilst cubicles are done in HPL and wood. We use high quality moisture resistant and fire retardant compact (HPL) laminate with decorative melamine facing on both sides.

Ironmongery and accessories are available in aluminum/nylon coated and corrosion resistant stainless steel finish.

WOODEN FLOORING & PROTECTIVE WALL PADDING

They are ideal for all kinds of sports, leisure, commercial, industrial and domestic applications. We provide quality and durable finishes using a variety of hardwoods from European Beech, Canadian Maple, and Teak to African Mahogany. These ranges of wood are also available with FSC certification.

For more budget conscious customers, we also have flooring available in engineered wood in various styles and finishes.

Our custom made wall padding complement sports flooring in sports halls and play arenas. It is available in attractive colors in 35mm and 50mm thickness and provides ample cushion against sports injury during play.





OUTDOOR FURNITURE

Our outdoor range of furniture consists of seats, benches, pergolas, kiosks, gazebos, litter bins etc. Our custom made outdoor furniture is in Meranti/African Teak or Iroko wood, 100% plastic recycled materials (PE & PP) as well as WPC. All our wood materials are weather resistant, insect and fungus proof and kiln dried and vac vac treated.

In addition, we also have a wide range of outdoor furniture, decking, cladding and fence in 100% plastic recycled materials in attractive designs from Govaplast, Belgium.

SPECTATOR SEATING

We provide spectator seating for indoor and outdoor use in all forms – telescopic, demountable, fixed and mobile seating. They come in modern, contemporary designs and have durable finishes. These seating have been extensively installed in sports halls, play arenas in schools, universities, and clubs and sports complexes.

We source our seats from leading manufacturers' in the U.S.A., Europe and the Far East Asia.





MAINTENANCE SERVICES

Health and safety is an important part of managing a sports facility, hence it is important that all aspects are in a good shape at all the times. We offer and carry our maintenance programs and are part of extended warranty that we provide on our flooring systems and equipment. Sports and leisure infrastructure is a long term investment and if properly maintained, will last the lifetime of the facility.

Every installation is unique, so our services are tailored to your needs. The routine maintenance involves repair of damages, facelift and refurbishment of floors, inspection of mechanical components of our equipment and carry out routine maintenance to ensure safety etc. Example of refurbishment includes adding a fresh layer of PU coating to the existing surface or spot repairs of areas subject to mechanical damage etc.



LIST OF KEY CLIENTS



هيئة الطرق والمواصلات
ROADS & TRANSPORT AUTHORITY



بلدية مدينة أبوظبي
ABU DHABI CITY MUNICIPALITY



OUR PARTNERS



California Products Corporation, U.S.A.

California Products Corporation, U.S.A. established in 1926 is the world's largest manufacturer and key innovator of acrylic sports surfacing systems and surface preparation products. Their surfacing systems have earned an international reputation for excellence and dependability and are a choice of many world-class competitive events.

(www.plexipave.com)



MRI-Polytech, U.K.

MRI-Polytech is an established player in the supply of athletic and safety surfaces and heavy-duty rubber extrusions. Their polyurethane binder and rubber granules have been used for installations to IAAF standards worldwide. MRI-Polytech is an ISO9001 accredited company.

(www.mri-polytech.com)



Rhino Flooring, U.S.A.

Rhino is a leading manufacturer of polyurea and performance polyurethanes and epoxy coatings.

(www.rhinoflooring.com)



Proludic, France

Proludic is a leading manufacturer of play and sports equipment for children, teenagers as well as adults. Proludic equipment has been inspected and certified by an independent body to conform to the European Standards EN 1176 and EN 1177

(www.proludic.fr)



OUR PARTNERS



Lausín Y Vicente, Spain

Lausín is specialized in manufacture of sports equipment for sports halls and stadiums including outdoor seating. The range includes basketball baskets, soccer and handball goals, volley ball and tennis posts and athletic and gymnastic equipment.
(www.lausinyvicente.com)



Empex Watertoys, Canada

Empex is an innovator of unique and interactive splash park equipment since 1986.
(www.watertoys.com)



Interkal LLC, U.S.A.

Interkal is a leading manufacturer of spectator seating, both for indoor and outdoor use. The telescopic seating systems are ergonomically designed for maximum spectator comfort.
(www.interkal.com)



Champward Chemical Industrial Co.Ltd., Taiwan

Champward Chemical established in 1984 is a leading manufacturer of polyurethane, epoxy, acrylic and aqueous emulsions and composites for use in recreational, commercial and industrial facilities.
(www.champward.com)



Govaplast, Belgium

Govaplast is a manufacturer of high quality 100% recycled plastic boards, decking, outdoor furniture and fences.
(www.govaplast.com)





BIN SABT SPORTS AND LEISURE LLC
P.O.Box: 109094, Abu Dhabi, United Arab Emirates
Tel. +971 2 6440303 Fax: +971 2 6441123



Email: info@sabtmmk.ae
www.binsabtsports.com

SABT INDUSTRY LLC
P.O.Box: 53734, Dubai, United Arab Emirates
Tel. +971 4 3472701 Fax: +971 4 3472453